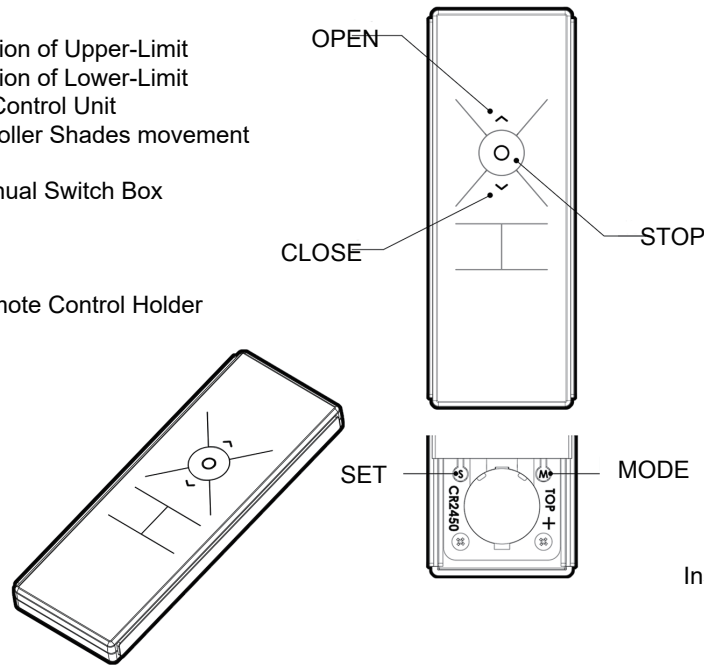
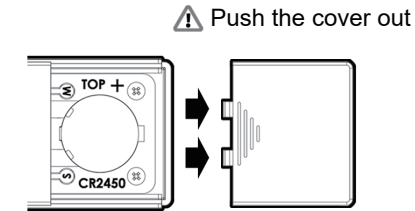


Table of Contents

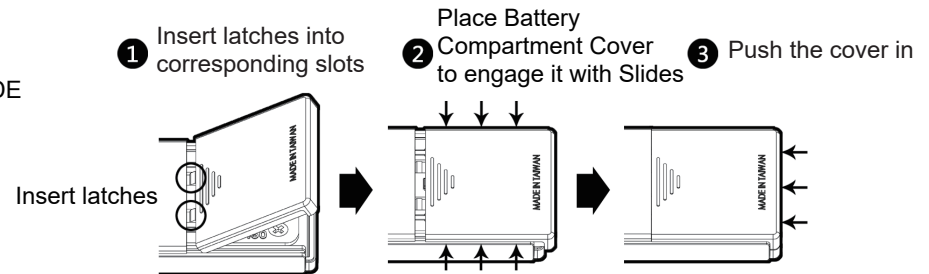
- 1-1 Setting or modifying position of Upper-Limit
- 1-2 Setting or modifying position of Lower-Limit
- 2-1 Adding another Remote Control Unit
- 3-1 Alter direction of Smart Roller Shades movement
- 4-1 Clear off Password
- 5-1 Externally connected Manual Switch Box
- 6-1 Battery Replacement
- 6-2 Product Specifications
- 6-3 Quick Setting Index
- 6-4 Instructions for using Remote Control Holder



How to open Battery Compartment Cover



How to replace Battery Compartment Cover



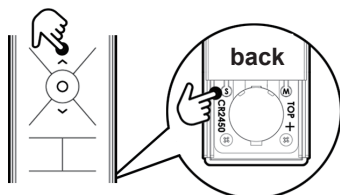
Key check-points prior to making settings

- 1 When setting Upper-/Lower-Limit points, set Upper-Limit first, then the Lower-Limit.
- 2 First, make sure if the direction of movement is correct. Verify if the Roller Shade moves upwards by pressing UP and downwards by pressing DOWN. After that, carry out setting or modification of Upper-/Lower-Limit points. In case the Roller Shade moves in the opposite direction, refer to the Steps of Item 3-1 in Table of Contents to correct the direction.

1-1 Setting or modifying position of Upper-Limit

STEP-1

Press [SET] + [Open] keys until the Motor makes a twitch, indicating the setting mode of Upper-Limit is activated.

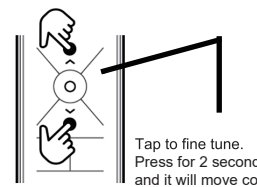


the Motor will make a twitch

When the Motor makes a twitch, the Roller Shade will move upwards and downwards at the same time as a response.

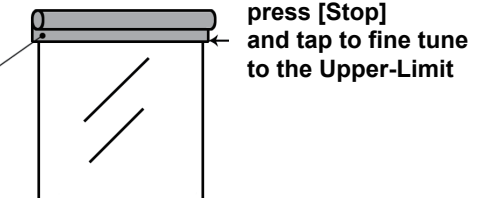
STEP-2

Press [Open] or [Close] key to move the Roller Shade to a pre-determined position, to be set as the Upper-Limit.



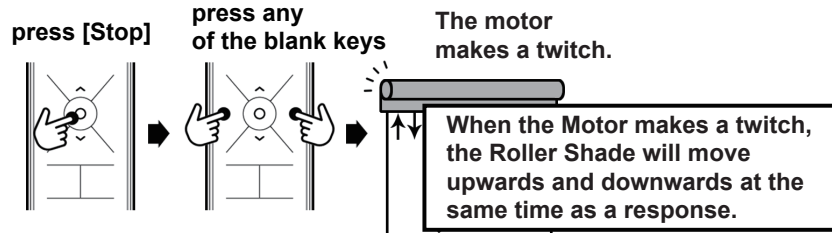
CAUTION

While the Shade is getting close to reaching the Upper-Limit, please press [Stop] to stop the movement to avoid damage to the motor. Then, tap to fine tune to the place where you would like it to be set up as the Upper-Limit.



When the pre-determined position is reached, press [Stop] key once to stop the movement; press any of the blank keys [Left] and [Right] + [Set] to confirm; the setting is completed when Motor makes a twitch.

STEP-3



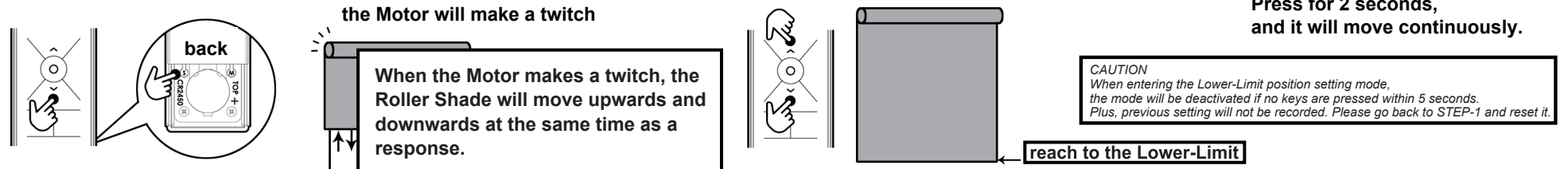
Setting Completed

When all procedures are done, the Upper-Limit setting is completed, too. And the setting of Lower-Limit has been cleared as well.

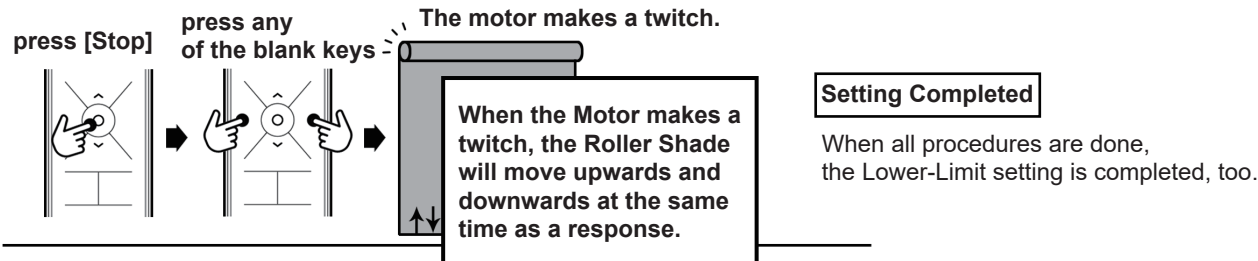
1-2 Setting or modifying position of Lower-Limit

STEP-1 Press [SET] + [Close] keys until Motor makes a twitch, indicating that the setting mode of Lower-Limit is activated.

STEP-2 Press [Open] or [Close] key to move the Roller Shade to a pre-determined position, to be set as the Lower-Limit.

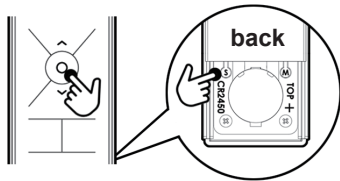


STEP-3 When the pre-determined position is reached, press the [Stop] key once to stop the movement; press any of the blank keys [Left] and [Right] + [Set] to confirm; the setting is completed when the Motor makes a twitch.



2-1 Adding another Remote Control Unit

STEP-1 Press and hold [SET] + [Stop] until the Motor makes a twitch, indicating that the setting mode of Adding another Remote Control Unit is activated.



the Motor will make a twitch

When the Motor makes a twitch, the Roller Shade will move upwards and downwards at the same time as a response.

STEP-2 Now press [Stop] key of the Remote Control to be added; the adding process is completed when the Motor makes a twitch.



the Motor will make a twitch

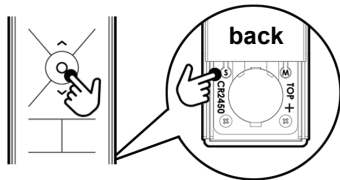
When the Motor makes a twitch, the Roller Shade will move upwards and downwards at the same time as a response.

Setting Completed

When all procedures are done, please do not press any key and wait for 5 seconds until the Motor makes a twitch, indicating that the setting is completed.

3-1 Alter direction of Smart Roller Shade

STEP-1 Press [SET] + [Stop] keys until the Motor makes a twitch, indicating the activation of the setting mode.



the Motor will make a twitch

When the Motor makes a twitch, the Roller Shade will move upwards and downwards at the same time as a response.

STEP-2 Now press [Open] + [Stop] + [Close] keys all together, Motor rotates in reverse direction;



press [Open] + [Stop] + [Close] keys all together again, Motor rotates in forward direction.

the Motor rotates in reverse direction for the 1st time

the Motor rotates in forward direction for the 2nd time

Setting Completed

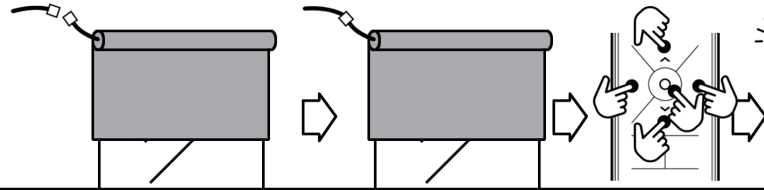
When all procedures are done, please do not press any key and wait for 5 seconds until the Motor makes a twitch, indicating that the setting is completed.

4-1 Clear off Password

STEP-1

Unplug power supply of the Motor, wait for 15 seconds, resume power supply of it. Press [Open] + [Stop] + [Close] + any of blank keys [Left] and [Right], altogether 4 keys, within 8 seconds until Motor makes a twitch.

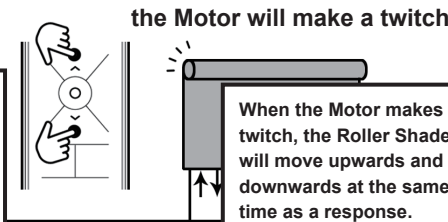
unplug power supply → wait for 15 seconds → resume power supply → press 4 keys altogether → the Motor makes a twitch



When the Motor makes a twitch, the Roller Shade will move upwards and downwards at the same time as a response.

STEP-2

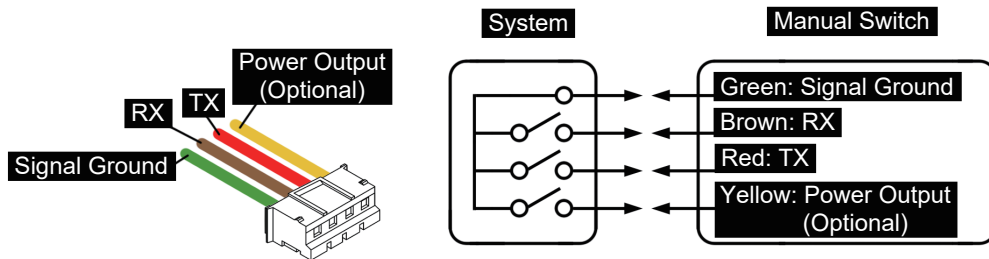
After Motor makes a twitch, simultaneously press [Open] + [Close] keys of the Remote Control within 8 seconds; Password is cleared off when the Motor makes a twitch.



Setting Completed

When all the procedures are done, only the password of this remote remains, others will be erased. If a new password is not added, the old password will not be erased.

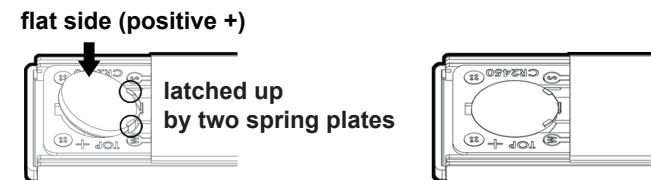
5-1 Externally connected Manual Switch Box



A brief contact will activate the function; DO NOT short-circuit continuously.

6-1 Battery Replacement

- With flat side (positive +) of the Battery facing upwards, making sure that the Battery is latched up by two spring plates, insert Battery in a slanted angle to enter it into the Battery Holder.
- Completed.



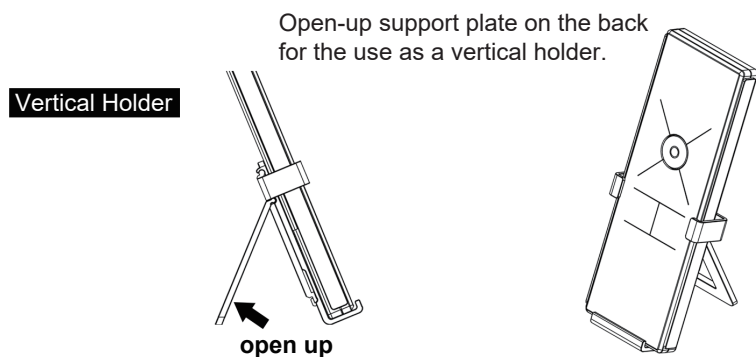
6-2 Product Specifications

Battery: CR2450 3V(One-time type lithium battery)
Dimensions: L 13CM, W 4.8CM, H 1.1CM
Standby Current: <1ua
Modulation Method: OOK
Encoding Method: Internally-burnt fixed coding
Transmission Frequency: 433.92MHz
Antenna Type: on board, Gain=0 dbi
Weight (including battery) 66g

6-3 Quick Setting Index

Upper-Limit Setting: [SET]+ [Left] or [Right] blank key
Lower-Limit Setting: [SET]+ [Left] or [Right] blank key
Set Favorite Position: [SET]+ [Close] *twice
Add another Remote Control: [SET] + [Stop], (Remote Control 2) [Stop]
Alter direction of Roller Shade movement:
[SET] + [Stop], [Open] + [Stop] + [Close] (reverse direction),
[Open] + [Stop] + [Close] (forward direction)
Clear off Password:
[Open] + [Stop] + [Close] +
any of [Left] and [Right] blank key, [Open] + [Close].

6-4 Instructions for using Remote Control Holder



Wall-mount Holder

Apply the provided double-face adhesive tape on the back of Holder and stick it onto the desired position on the wall, as a wall-mounted holder.

